

Correction

Figures 2A, 2B, and 3B in the article “Results of a Meta-Analysis Comparing the Tolerability of Lercanidipine and Other Dihydropyridine Calcium Channel Blockers,” by K. Makarounas-Kirchmann et al (*Clin Ther.* 2009;31:1652–1663) contained errors. In Figure 2B, the correct heading over the forest plot should read, “RR (Random) With 95% CI.” Corrected versions of Figures 2A and 3B are provided here:

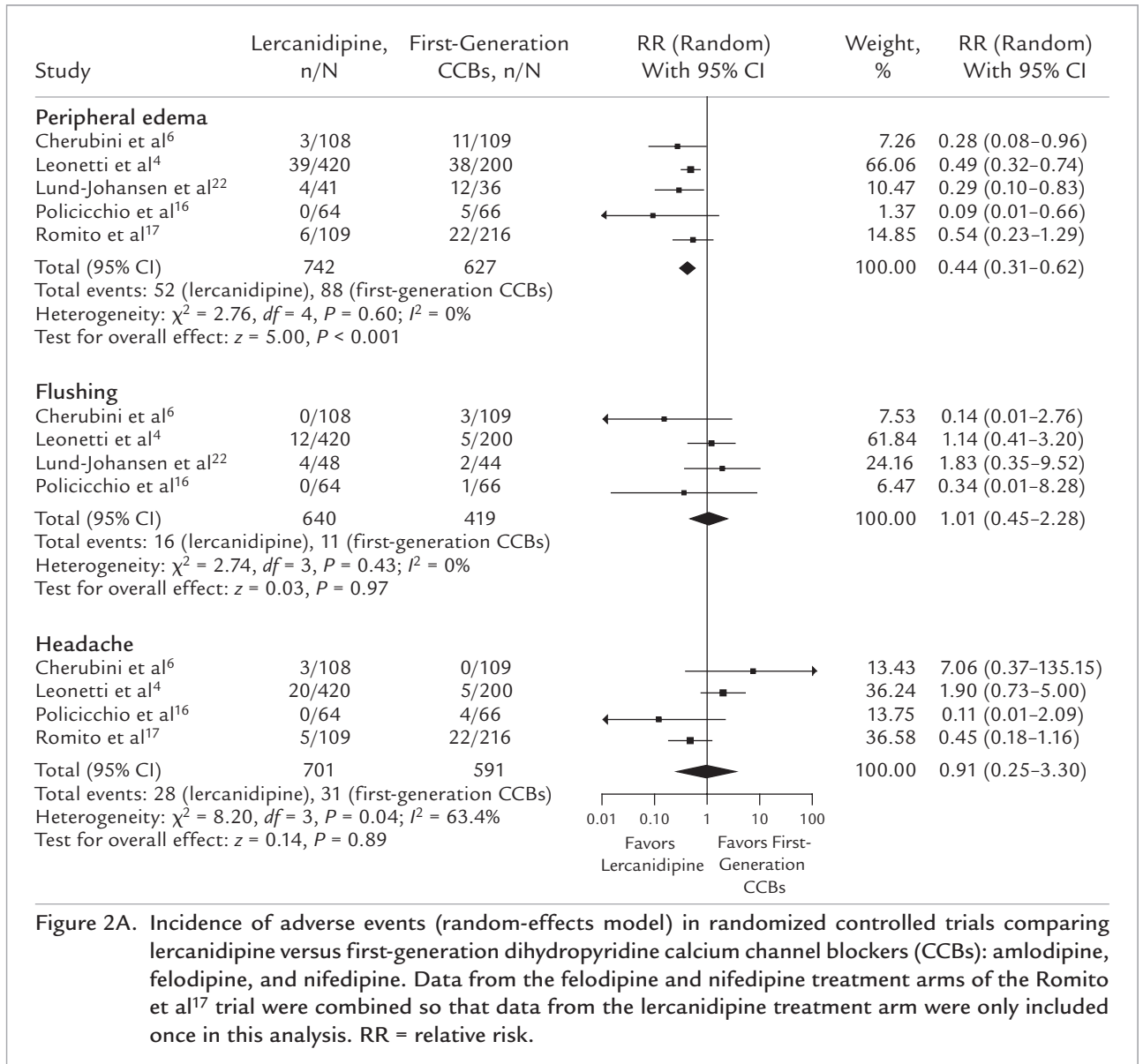


Figure 2A. Incidence of adverse events (random-effects model) in randomized controlled trials comparing lercanidipine versus first-generation dihydropyridine calcium channel blockers (CCBs): amlodipine, felodipine, and nifedipine. Data from the felodipine and nifedipine treatment arms of the Romito et al¹⁷ trial were combined so that data from the lercanidipine treatment arm were only included once in this analysis. RR = relative risk.

(continued)

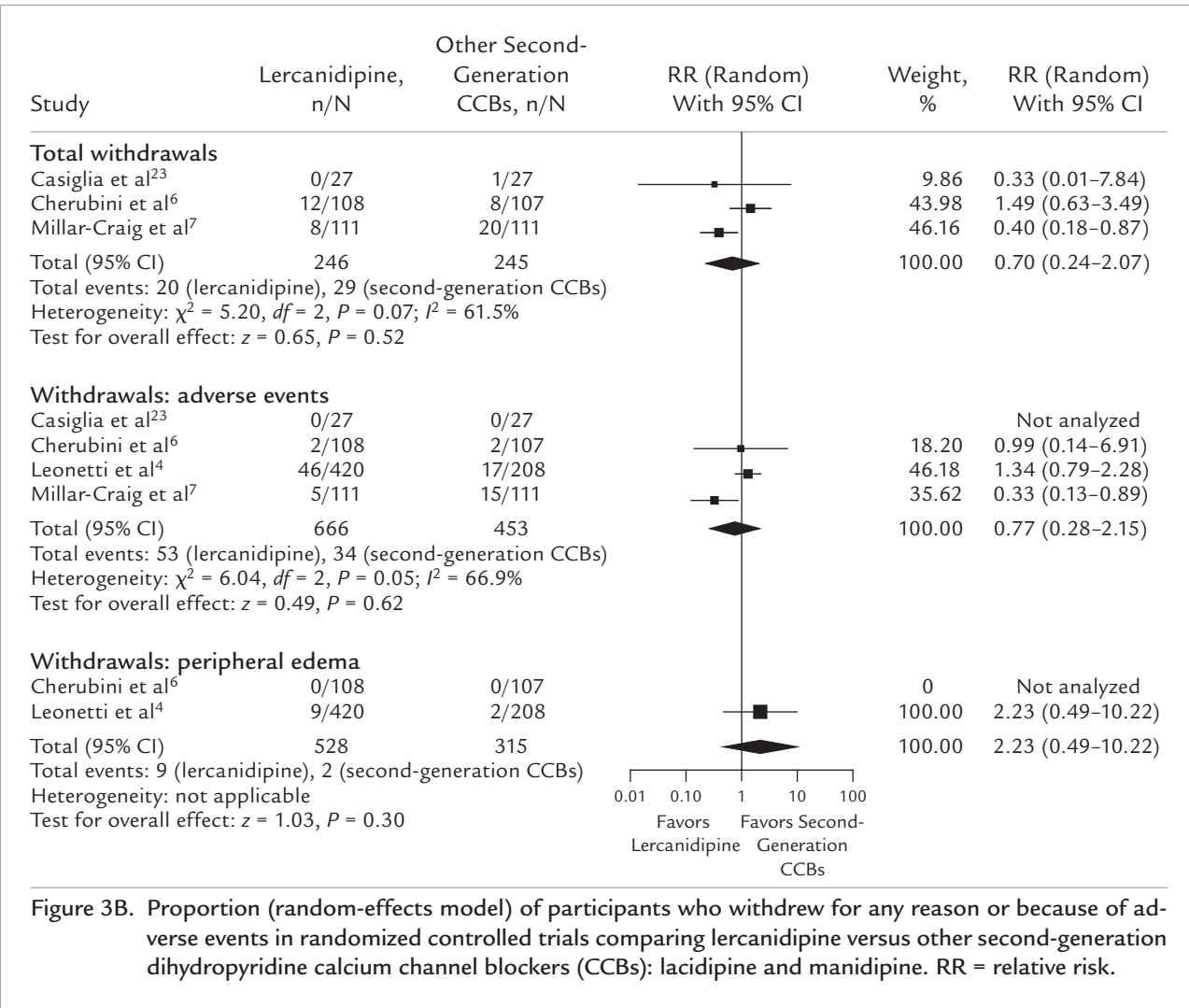


Figure 3B. Proportion (random-effects model) of participants who withdrew for any reason or because of adverse events in randomized controlled trials comparing lercanidipine versus other second-generation dihydropyridine calcium channel blockers (CCBs): lacidipine and manidipine. RR = relative risk.